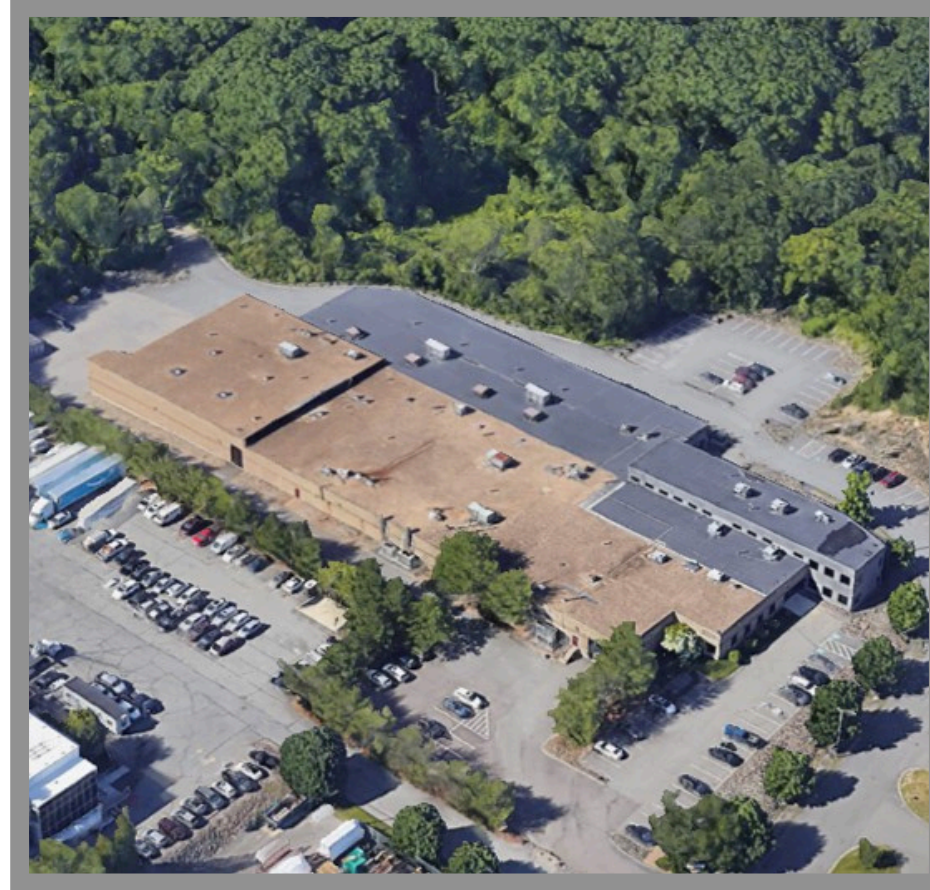


1 Technology Way Salem, MA

- **Available SF:** 22,000 SF
- **Timing:** Immediately
- **Clear Height:** 15'
- **Loading:** One dock door with leveler (expandable)



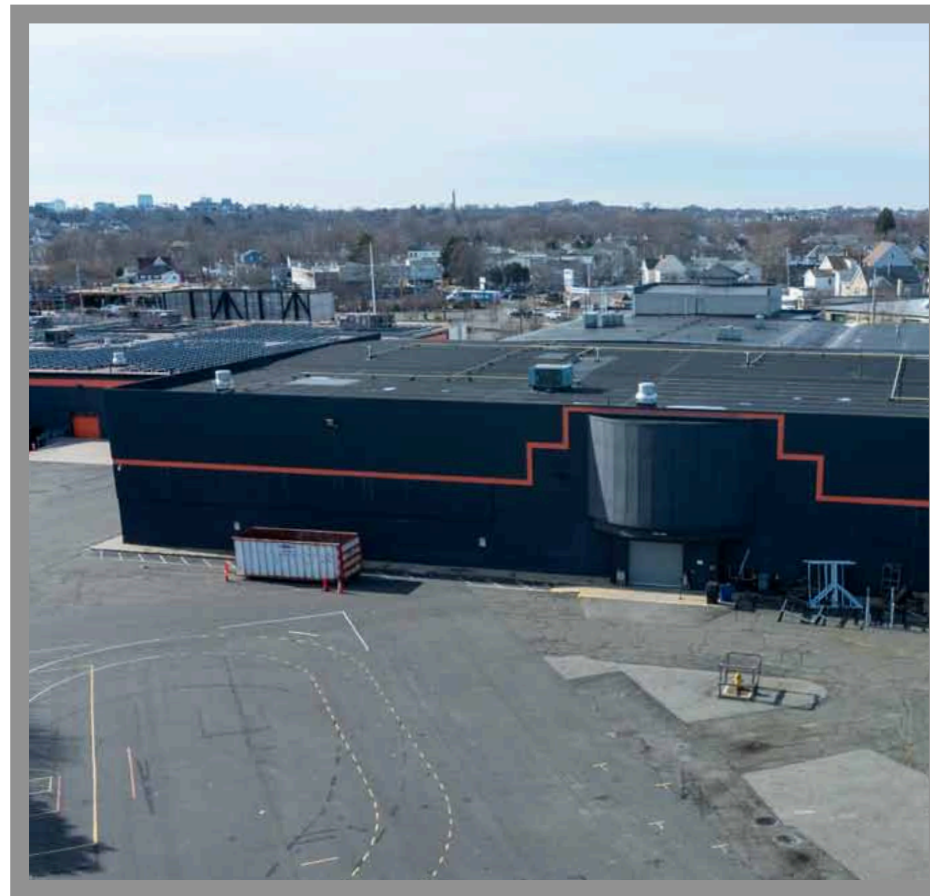
900 Bedford Street Bridgewater, MA

- **Available SF:** 219,000 SF
- **Timing:** Immediately
- **Clear Height:** 32'
- **Loading:** Up to 36 doors with 2 drive in doors



1 Wesley Street Malden, MA

- **Available SF:** 26,000 SF
- **Timing:** Immediately
- **Parking Ratio:** 5/1,000 parking ratio (1.5 acre parking field)
- **Onsite Amenities:** Urban warehouse off Route 1, large billboard signage available



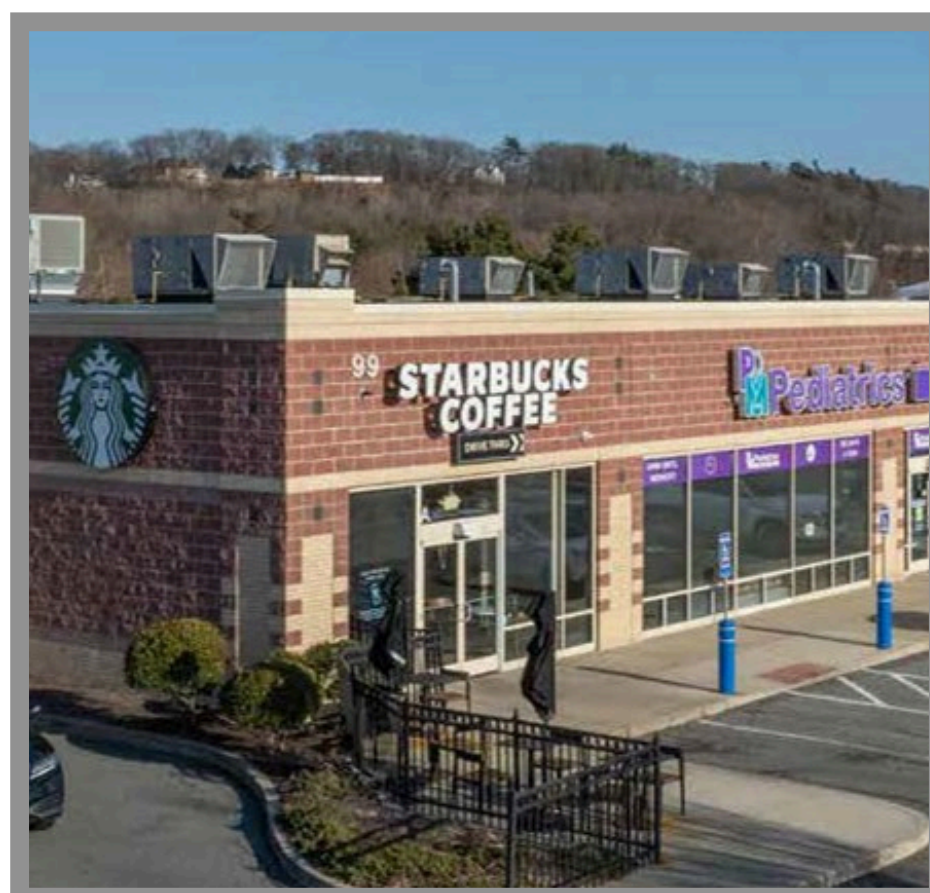
200 Foxborough Blvd. Foxborough, MA

- **Available SF:** 5,000–8,000 SF
Suite 200, 5,675 SF
Suite 600, 8,684 SF
Suite 900, 4,640 SF
- **Timing:** Immediately
- **Parking Ratio:** 3.87/1,000 SF
- **Onsite Amenities:** High-end flex space w/ direct suite



99-103 Commerce Way Woburn, MA

- **Available SF:** 1,237–2,534 SF
- **Timing:** September 2025
- **Parking Ratio:** 5/1,000 parking ratio
- **Onsite Amenities:** Shadow anchored by one of the best Target supercenters in the region, a rare vacancy in a dominant retail node off Route 128 and I-93



790 Boston Road Billerica, MA

- **Available SF:** 7,679 SF (Office space on 2nd and 3rd floors)
- **Timing:** Immediately
- **Parking:** 54 Surface Parking Spaces; Covered Parking
- **Property Highlights:** Close proximity to Route 3 and I-95



Properties for Lease

Meadow Street Chicopee, MA

New Construction/Build-to-Suit

- **Available SF:** 156,000 SF
- **Timing:** Q4 2023
- **Clear Height:** 32'
- **Fire Safety:** ESFR Sprinkler System
- **Loading:** 1/5,000 SF



72-94 Rowe Street Newton, MA

- **Available SF:** 2,000-10,000 SF
- **Timing:** Immediately
- **Parking Ratio:** 1.5/1,000 SF
- **Signage:** Branding opportunity on Mass Pike



5 Research Parkway Wallingford, CT

- **Available SF:** 450,000 SF
- **Timing:** - FULLY ENTITLED For Immediate Build
- **Clear Height:** 40'
- **Loading:** 105 dock door positions
- **Access:** 0.25 mile off I-91



1786 and 1800 Overview Drive Rock Hill, South Carolina

- **Available SF:**
 - 1786 Overview Drive: 75,000 SF of distribution space
 - 1800 Overview Drive: 212,000 SF of manufacturing space
- **Timing:** Immediately
- **Distribution:** 32' clear, 18 dock high doors, 2 drive in doors, speculative office and bathrooms
- **Manufacturing:** 26' clear, 5 dock high doors, 3 drive in doors, 6,000 amps of power, finished office space



15 John L. Dietsch Blvd. North Attleborough, MA

- **Available SF:** 162,710 SF - FULLY ENTITLED
- **Timing:** Q4 2024
- **Clear Height:** 32'
- **Loading:** 27 loading docks; 2 drive in doors

